

Maintenance instructions

Coating of the facade panel and caulking of the joints not permanent.

The durability of fiber cement panel greatly affected by natural phenomena weather conditions such as sunlight (ultraviolet rays), wind and rain, snow, and changes in temperature, as well as typhoons and earthquakes and the degree of the maintenance of fiber cement panel. If the proper maintenance (inspection & maintenance) conducted often it will delay the aging not only of facade panel but also of the building itself, leading to keep up the value of the property for long time.

1. Daily maintenance

Conduct inspection of the exterior of the building by appropriate method once a year in a safely manner.

Conduct inspection of the exterior wall visually once a year. (Working in high places is strictly prohibited.)

In particular, please check after an earthquake or typhoon.

If you find any changes on the exterior that makes you worry please consult with the housing company or the contractor for early maintenance. (Maintenance costs will be borne by the owner.)

Inspection of the painted surface of siding panel

- Inspect the painted surface for discoloration (chalking), peeling and cracking, and for stuck stains, mold and algae.

* When whitening, discoloration, peeling, etc. become noticeable, it is time for repainting.

* The degree of discoloration and the conspicuousness of stains vary depending on the type of siding, color tone (paint), location conditions and shape of the building.

Inspection of Siding panel substrate

- Check the siding panel for cracks, warpage, swells, chips, and other defects

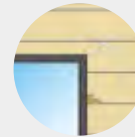
* Check particularly around the openings, cracks around nails (screws), siding panels misalignment after an earthquake.

Inspection of other parts

- Inspect the steel accessories for rusting and deterioration of the coating layer.
- Make sure if nails (screws) are not floating.



Discoloration (chalking) of the siding panel, cracks in the coating, stains, mold, algae, etc that can not be removed.



Siding panels cracks, chips, warpage, swells, etc.

2. Daily care

Please consult with the home builder or building contractor for proper maintenance and care.

- To remove dirt such as bird droppings, dust, algae, and mold, wash lightly with a cloth or soft sponge.

In that case, make sure not to damage the painted surface.

If dirt is not washed off by applying water, use a soft cloth to wash it with a diluted neutral detergent, and then rinse it off with tap water.

Caution

· Avoid using the followings as it may damage the coating of the panel.

- ① Thinner solvent
- ② Hard brush like metal scrubbing brush
- ③ Cleaning with high pressure water and steam cleaning

· When washing with water, make sure to sprinkle water downward on the wall. Sprinkling water upwards may cause water penetration through the joints.



- Algae and mold

Due to different nature of algae and mold the conditions of occurrence may differ as well, however, if the environmental conditions are met for them both can occur not only on the siding panels of the buildings but also elsewhere.

It is possible to remove algae and mold, however, the effect does not last long, so there is a possibility of recurrence.

In order to keep it removed continuously, it is necessary to take good care of it.

However, it may not be possible to remove it if it is penetrated into a small gap/space.

In general, environment and the parts in which algae and mold are likely to grow

- ① Location conditions: ponds, rivers, irrigation canals, fields, forests, etc. in the vicinity.
- ② The north part of the building with poor ventilation and high humidity
- ③ Upper side of window where water and dirt easy to be collected
- ④ Due to short protrusion of eaves and openings rainwater can easily splash on siding panel

3. Maintenance of siding panel

For repainting and repair work, basically, please consult with the the home builder or building contractor who built the building and ask a professional contractor to perform proper maintenance.

*Please be noted the maintenance costs will be borne by the owner.

Disclaimer

Please note that KMEW is not responsible for for the following cases.

- When damage such as cracks due to natural disasters, surrounding environment, pollution, etc., or stains or discoloration of moss, algae or mold due to normal aging occur.
- When a problem occurs due to insufficient maintenance of the resident or intentional or negligence of the resident or a third party.
- When a problem occurs because the resident has made an extension/renovation or repair after moving in and attached various equipment and accessories.
- When a problem such as deformation or abnormality due to the structure of the building or decay of the wooden frame due to dew condensation occurs.
- When an accident caused by installation, rust on nail occurs, etc.

Instructions on repainting or repairing the fasade panels (for the professional contractors)

Repainting siding panel

- Please repaint factory-pre-finished coating siding panels based on daily inspection results .

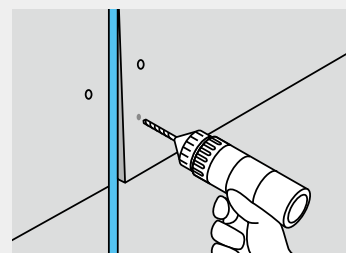
When repainting siding panels on site, make sure to check the type of paint with your home builder or paint manufacturer.

Caution

*For a multi-colored siding panel, when its panel surface gets deteriorated, some paint expressions cannot be reproduced.

Repair of siding panel substrate

- For a crack, make a V-cut on the panel and fill it with putty and apply touch-up paint.
If putty repair is not sufficient then replace the siding panel.
Use equivalent or alternative siding panel for replacing.
- If there are warps or burrs, make sure if studs are available around them, pre-drill pilot holes, and then fasten with stainless steel screws.
- When the siding panel is damaged by an impact from outside, repair it with putty or replace the panel.



Repair of other parts

- Apply paint when a steel accessory such as flashing rusts or the coating peels off.
- If you can see the floating of the siding fastening nail (screw), fasten the floating nail (screw) tightly.
In addition, make sure if a stud is available around it, then pre-drill a pilot hole and fasten one more place with a stainless screw..